

2022

▪ Better Inside, More in Sight ▪



V1.0



Milesight Technology [www.milesight.com](http://www.milesight.com)

Tel: +86-592-5922772(8801) - Sales +86-592+5922772(8701) - Support

Mail: [sales@milesight.com](mailto:sales@milesight.com) [support@milesight.com](mailto:support@milesight.com)

MILESIGHT USA

Tel: +1-800-561-0485

Add: 220 NE 51st Street Oakland Park, Florida 33334, USA

MILESIGHT KOREA

Tel: +82-31-990-7732

Add: 925, Anyang SK V1 Center,

LS-ro 116beon-gil, Dongan-gu, Anyang-si, Korea

MILESIGHT CHINA

Tel: +86-592-5922772

Add: Building C09, Software Park Phase III, Xiamen 361024, Fujian, China



[www.milesight.com](http://www.milesight.com)

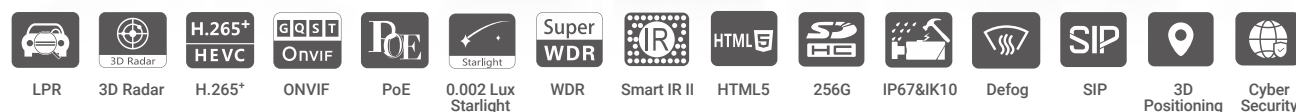


Reaching the New Level of Traffic Management





## Milesight Intelligent ANPR Solution



The rising of road-related issues, such as traffic congestion, parking problems and road accidents, poses serious challenges to global traffic management agencies and places higher demands on traffic monitoring systems.

Milesight Intelligent ANPR Solution that combines video surveillance with AI, ANPR, 3D Radar and other cutting-edge technologies helps to alleviate these concerns. It helps traffic management agencies systematically and intelligently monitor and understand road users' behavior and gain valuable insights based on real-time data to optimize traffic flow, minimize accident risks, reduce congestion and respond to emergencies more efficiently, which significantly optimizes traffic management and makes transport safer and smoother.



Powered by AI



NDA Compliant

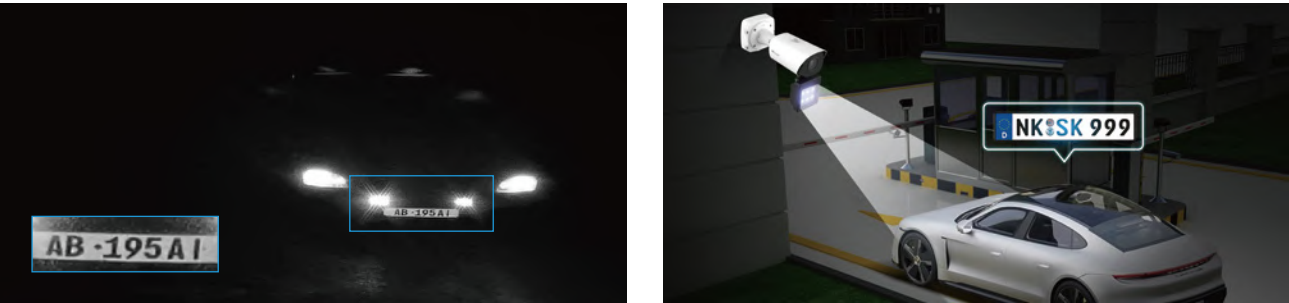


# Precise Capture

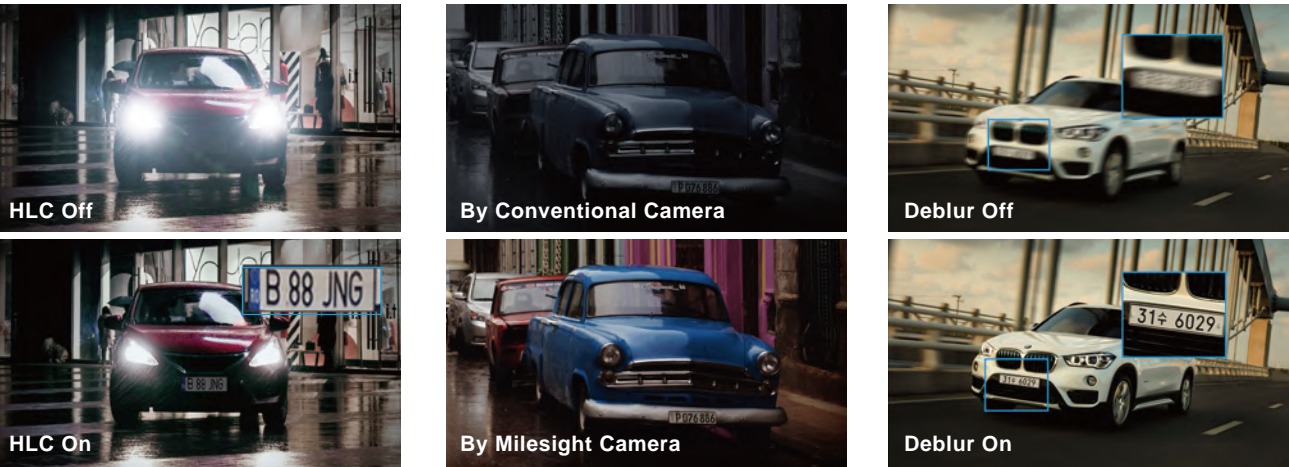
Designed for a wide range of applications in traffic monitoring, Milesight AI LPR cameras are capable of achieving extremely high-quality and reliable license plate capturing in high accuracy. With the powerful capturing performance, Milesight AI LPR cameras can deliver clear and detailed images of capture results, facilitating effective license plate recognition applications in various scenarios.

## Superior Image Quality for 24/7 Traffic Monitoring

- LPR Image Mode
- Integrated Supplement Light



- HLC (Highlight Compensation)
- 0.002Lux Starlight
- High-quality Deblur



## Excellent Capture Performance at High Speed and Accuracy

**200km/h**  
Recognizable Speed

**>95%**  
High Recognition Accuracy

**100fps**  
High Frame Rate

**4** Detection Regions

License Plate Serial Format

# AI-empowered LPR

When AI meets LPR, a whole new world of possibilities opens up, as the camera can not only achieve highly accurate recognition in challenging lighting and environmental conditions, but also identify vehicle features that can then be searched by LPR Smart Search function for handy traffic monitoring.

## Embedded AI LPR Algorithm

- Based on AI deep learning neural network
- Detect and recognize vehicles, plates and characters precisely in real-time
- Deal better with smudges, plate variation, lighting changes or different angles compared to traditional LPR algorithm

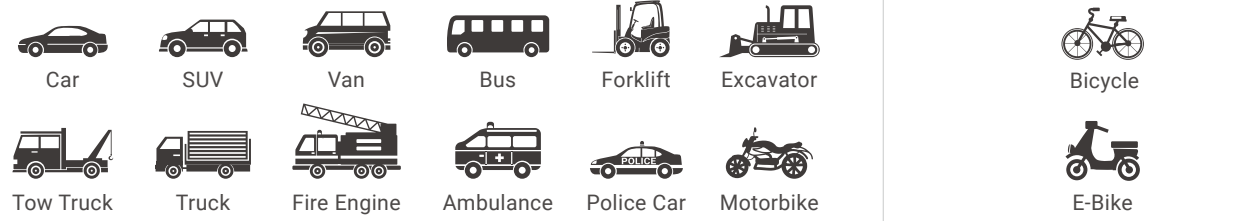


## AI-based Vehicle Attributes Recognition

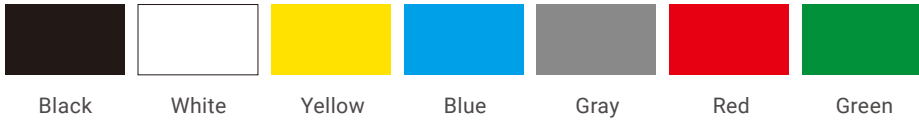
Besides the high accuracy license plate recognition powered by embedded AI LPR algorithm, Milesight AI LPR camera can also realize AI-based attributes recognition such as vehicle type, vehicle color and plate color, helping gain a new level of insights for further analysis.

### Vehicle Type

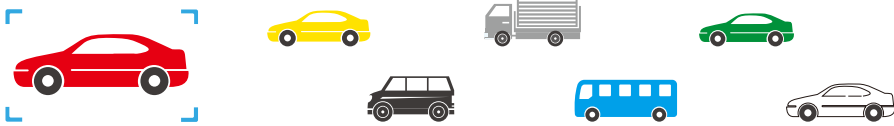
- Motorized Vehicle
- Non-motorized Vehicle



### Plate Color



### Vehicle Color





# I

## ntegrated 3D Radar



Milesight innovatively combines 3D Radar, AI and LPR technologies to create a camera that can not only identify vehicles and read plates accurately, but also precisely provide extra real-time data of vehicle position, direction and speed, etc. The all-in-one Radar AI LPR camera is easy to install as the 3D radar module is already integrated into the camera directly, realizing the hassle-free traffic flow monitoring solution.

### Excellent Radar Capabilities for Road Monitoring

Adopting 60GHz FMCW radar, Milesight 3D radar technology allows Milesight Radar AI LPR camera to cover 4 lanes and 32 vehicles detection at one time and detect the high driving speed up to 200km/h with just a compact size of radar module.



200km/h  
Detection Speed



90m  
Detection Distance



2 Vehicle  
Directions



4 Lanes  
Monitoring



32 Vehicles  
Detected at One Time



Vehicle  
Counting

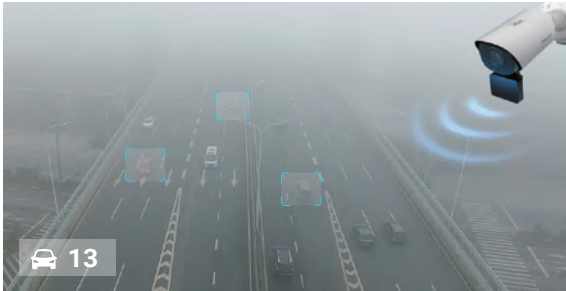
### 3D Radar Localization

The 3D radar provides a three-dimensional view of range, altitude and direction which can precisely locate the vehicle compared to conventional radar technology, greatly enhancing the usability of Milesight ANPR solutions with visualized vehicle position.



### Accurate Detection for All Weather Conditions

Furthermore, the 3D radar enjoys higher environmental adaptability that can offer precise information in any weather conditions, at any time of day or night, greatly lowering the cost of false alarms.



Foggy Days



Rainy Days



Low Light Environment



Strong Light Environment



# Plate Management & Search

Besides exceptional capture and recognition performance, Mileight AI LPR cameras feature on-camera plate management for black/white lists which can also be configured based on schedules. And LPR Smart Search enables security operators to search and quickly find relevant videos for further investigation.

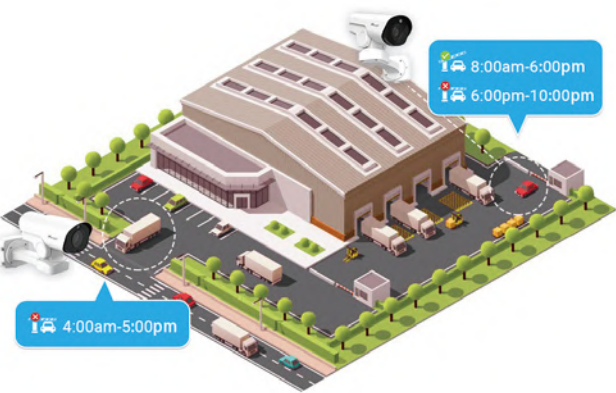
## Black/White List Management

Mileight AI LPR cameras can automatically identify license plates based on the embedded whitelists or blacklists, allowing for efficient gate control by taking instant actions according to the plate types.



## List Scheduling Management

Mileight AI LPR cameras provide accurate identification and support list scheduling management, ensuring extremely flexible and customizable gate control with enhanced security to fulfill the management needs for different days and time periods.



## LPR Smart Search

With Mileight LPR Smart Search, relevant videos can be found quickly by searching for only a portion of the target suspect vehicle's attributes, such as color, plate color, plate number, vehicle type, direction and etc., ensuring efficient event investigations and intelligent traffic monitoring.

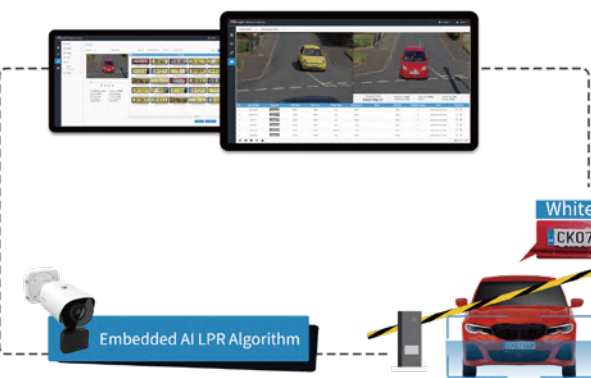


# Flexible Deployment

Mileight is committed to bringing to market the most user-friendly and high-performing products and solutions. For applications on traffic monitoring, Mileight offers a number of options to guarantee the flexible deployment of Mileight ANPR systems.

## Stand-alone LPR Solution

With the built-in AI LPR algorithm and embedded black & white lists, Mileight AI LPR cameras enable to achieve stand-alone solutions for license plate recognition, realizing the fast implementation for scenarios such as gates or barriers controlling in high efficiency and accuracy.



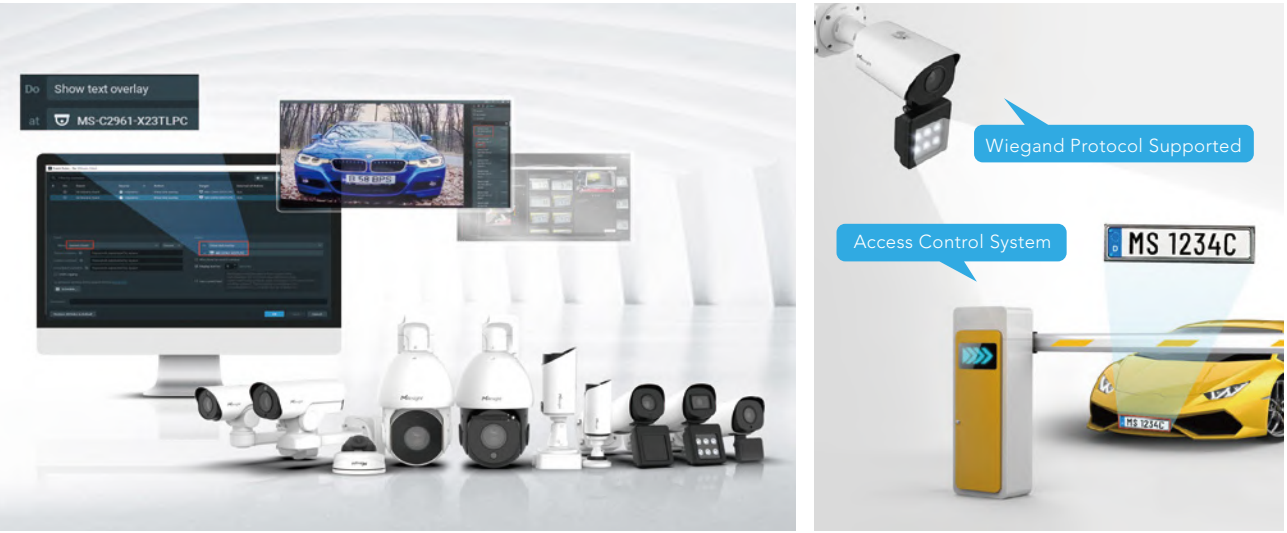
## Closed-loop ANPR Solution

Mileight AI LPR cameras can well work with Mileight own back-ends including Mileight NVR, CMS and Mileight VMS Enterprise to form completely closed-loop ANPR solutions. The highly integrated system guarantees a smooth experience in traffic and road management, as well as access control



## 3rd Integration with CGI/APIs

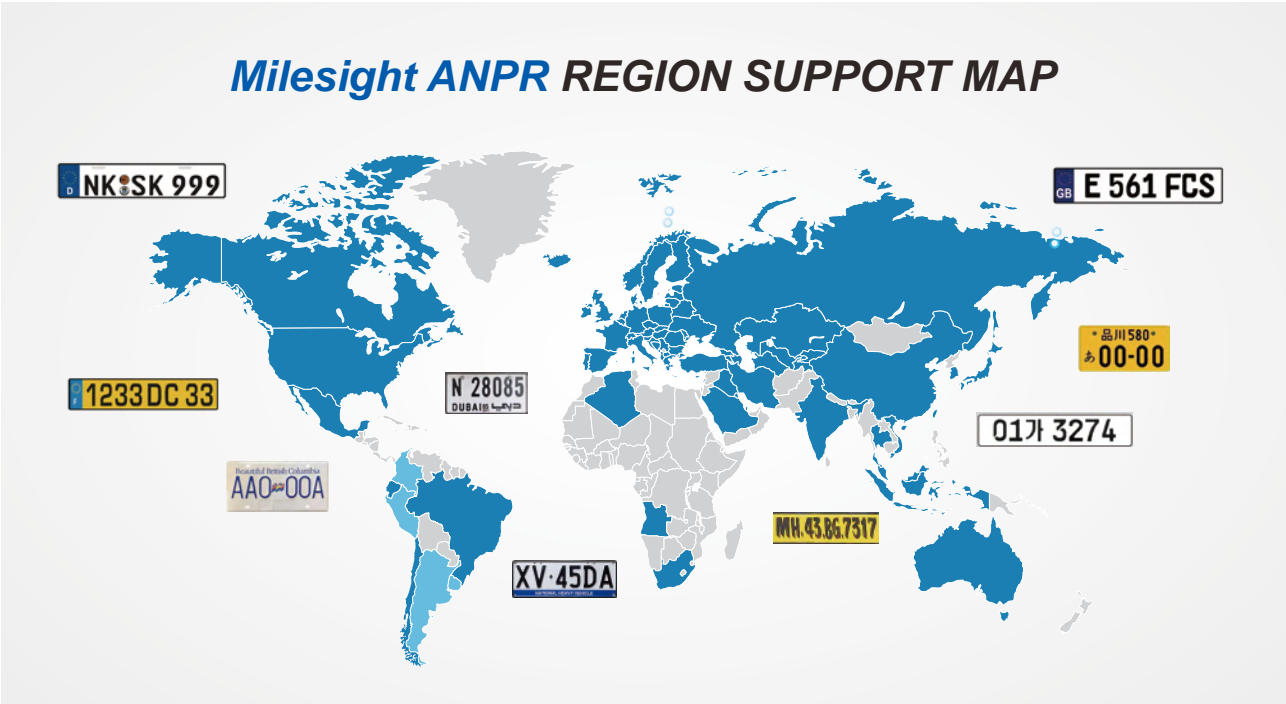
To maximize the usability, Mileight AI LPR camera also offers various CGI/APIs and supports interfaces and protocols like Wiegand, TCP, HTTP, etc., which allow the easy open integration with third-party VMS or platforms, realizing solutions such as traffic management, toll collection, and access control.





# Broad Regional and Country Support

Backed up by strong R&D strength and accumulated expertise in LPR applications, Milesight ANPR solution can be well applied to broad regions and countries worldwide. We’ve now covered a wide range of areas including:



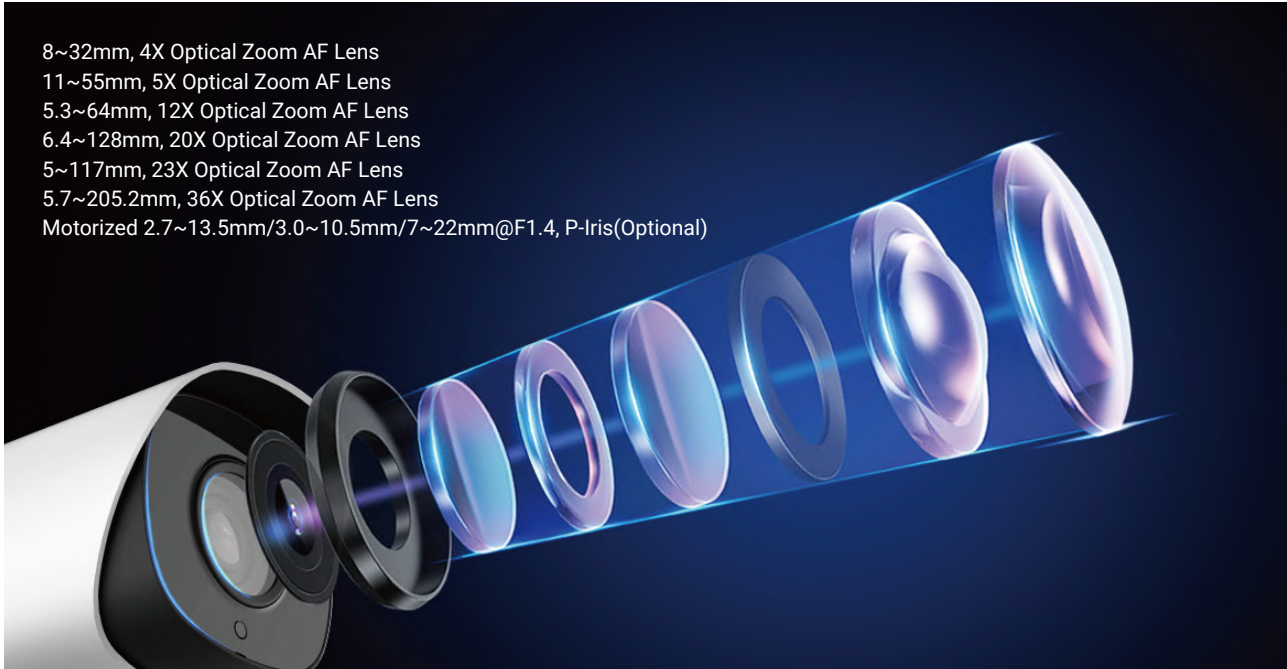
State Name	Country Name					
Asia	Armenia	Hong Kong(China)	India	Indonesia	Japan	Philippines
	Kazakhstan	Kyrgyzstan	Macau(China)	Malaysia	Singapore	Sri Lanka
	South Korea	Taiwan(China)	Tajikistan	Thailand	Turkmenistan	Maldives
	Uzbekistan	Vietnam	China			
Europe	Austria	Albania	Azerbaijan	Belarus	Belgium	Curaçao
	Bosnia and Herzegovina	Bulgaria	Croatia	Czech	Cyprus	Kosovo
	Denmark	Estonia	Finland	France	Georgia	Spain
	Germany	Greece	Hungary	Italy	Iceland	Sweden
	Ireland	Latvia	Lithuania	Luxembourg	Macedonia	United Kingdom
	Malta	Moldova	Montenegro	Netherlands	Norway	Vatican City
	Poland	Ukraine	Slovakia	Switzerland	Russia	Slovenia
	Turkey	Portugal	Romania	Serbia		
Middle East	Iran	Iraq	Israel	Saudi Arabia	Qatar	Oman
	UAE	Kuwait	Bahrain	Lebanon		
North America	Guatemala	Costa Rica	Panama	Puerto Rico	Jamaica	Saint Lucia
	Canada	Mexico	United States	Grenada	Barbados	Trinidad and Tobago
South America	Brazil	Chile	Ecuador	Colombia	Peru	Uruguay
	Argentina					
Africa	Angola	South Africa	Algeria	Kenya	Rwanda	Cote D'Ivoire
	Ghana	Nigeria	Mozambique	Mauritius		
Oceania	Australia	New Zealand	Fiji			

# Various Models Available

Boasting multiple models including Bullet, Dome, PTZ and Radar models, Milesight covers a wide range of AI LPR products from entry level to advanced to meet various requirements. Multiple applications, such as highways, intersections, parking lots and etc, are able to well safeguarded by the matched cameras.

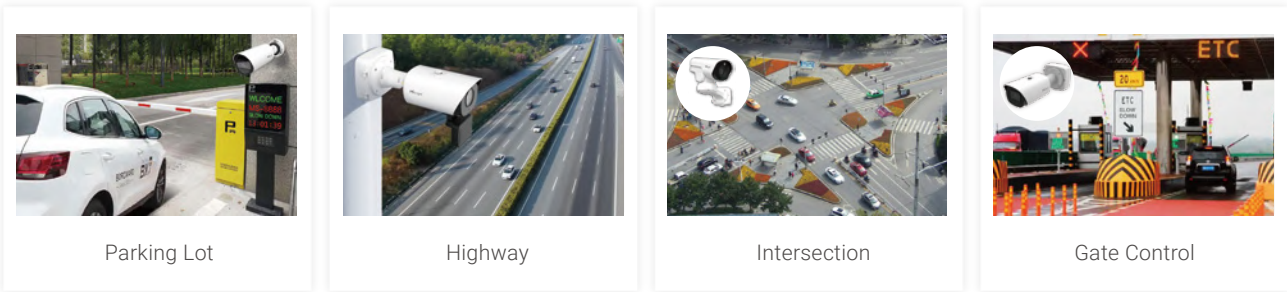
## Diversified Lens Options

Cameras equipped with motorized zoom & focus lens allow remote control of focal length, iris and focus through the use of a lens controller, which is perfect for long distance surveillance in areas such as parking lots, highways and ports. And auto focus lens help zoom up to distant objects while still maintaining the clarity, delivering high quality video over the entire zoom image.



## Multiple Installation Modes

Additionally, various installation modes including pole-mount, wall-mount and pendant mount, are ideal for the better monitoring of different application scenarios. Having a variety of good mounting options to choose from enables you to place the camera in convenient locations and more easily deploy cameras where you need.





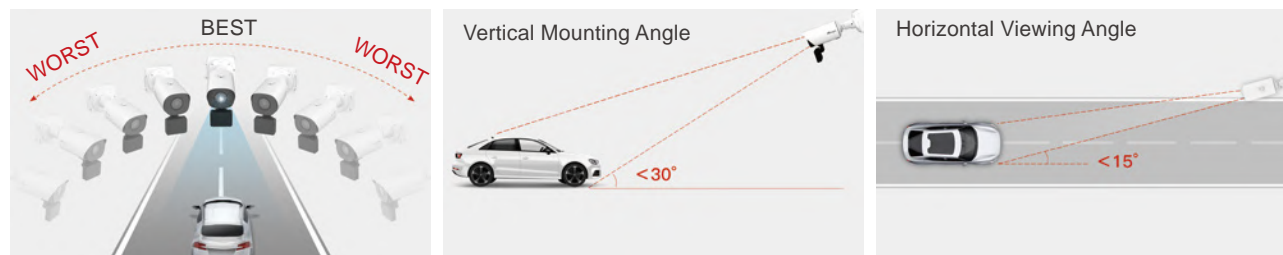
# Easy Setup

## Start Milesight LPR Camera Easily

Milesight provides a series of clear and detailed installation guides as well as tutorial videos to ensure easy installation and configuration of LPR cameras. With the most user-friendly LPR user interface, users can get the LPR configuration done efficiently, saving time and learning costs significantly.

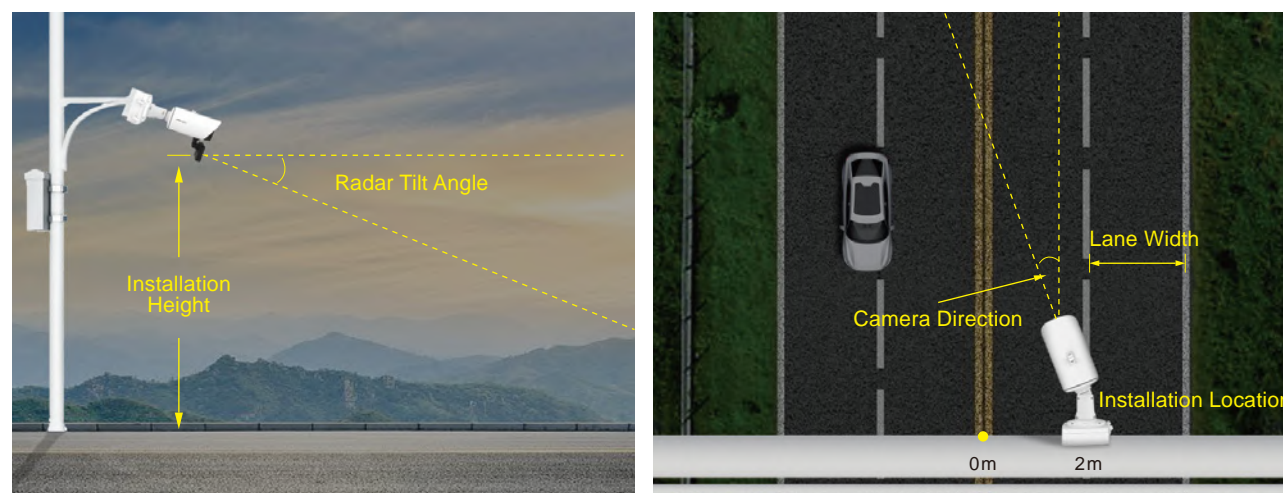


For the best possible license plate capture, installing the camera in a proper location as suggested below is highly recommended.



## Simple Steps for Radar Camera Configuration

After installing Radar AI LPR camera in an appropriate position, users will just need to fill in a few parameters to get the configuration done easily. By filling in parameters such as Installation Height, Radar Tilt Angle, Camera Direction and Trigger Distance, the results of Radar AI LPR camera detected and recognized will be precisely matched to corresponding vehicles in multiple lanes, enabling efficient and accurate traffic monitoring.



# Milesight Intelligent ANPR Solution

## Manage Traffic with Innovations

### Overview

Featuring powerful LPR functions, Milesight Intelligent ANPR Solution is suited for a variety of applications scenarios that require high-performing, easy-to-use and scalable ANPR system. The robust solution consists of traffic violation solution, traffic flow control, access control and parking lot management, meeting the most needs of LPR applications.







## VMS + ANPR Integration

Based on years of R&D experience in security industry, Mileight is capable of providing comprehensive and highly-integrated security solutions with front-end devices and back-end management software. Mileight VMS Enterprise is a robust and centralized software platform that can work well with Mileight LPR cameras to get recognized license plates, detected speed and achieve advanced functions for gate control or intelligent traffic monitoring solutions.

### Get Intuitive Liveview and Accurate ANPR Results

Featuring high-performing ANPR functions and the dedicated interface, Mileight VMS Enterprise provides the most user-friendly all-in-one ANPR solution that fully integrates with LPR cameras.

### Search and Locate Vehicles Faster and Smarter

The convenient ANPR Search enables operators to quickly search and locate the associated videos based on target vehicle's features, such as vehicle color, plate color, plate number, vehicle type and direction.

### Various Events & Alarm Actions

In Mileight VMS Enterprise, users may easily set various events rules and the corresponding alarm actions to maximize traffic safety and productivity. Taking Black/White List Event as an example, if a plate is recognized as the one on the pre-defined black list, related event actions will be triggered based on the pre-configured Black/White List alarms.



## Manage Lists Flexibly to Level up ANPR Management

- Add recognized license plates to a white/black list easily in ANPR preview
- The plates that are in accordance with customized rules will be added to the group automatically
- Support configuring the rules and actions for each group separately



## Radar Data Integration for Traffic Flow Control

- Receive real-time detection data such as vehicle speed and direction from Mileight Radar AI LPR Camera
- Get instant alerts in VMS when a vehicle drives over-speed or drives in the wrong direction
- Monitor and take actions basing on the alarm triggered by counting data that exceeds the limit



## NVR + ANPR Integration

Defined as the Enterprise ANPR management system, Mileight NVR becomes the central management site to easily monitor the traffic, including the real-time preview of the car plates, smart analysis and other more detailed settings.



## CMS + ANPR Integration

Mileight CMS provides a total solution for Mileight LPR cameras and NVRs, to achieve powerful ANPR management more conveniently. With high-efficient management performance, Mileight CMS is ideal for receiving plate recognition results, managing events triggered by plates on blacklists or whitelists, etc., realizing a superior experience in such a centralized system.





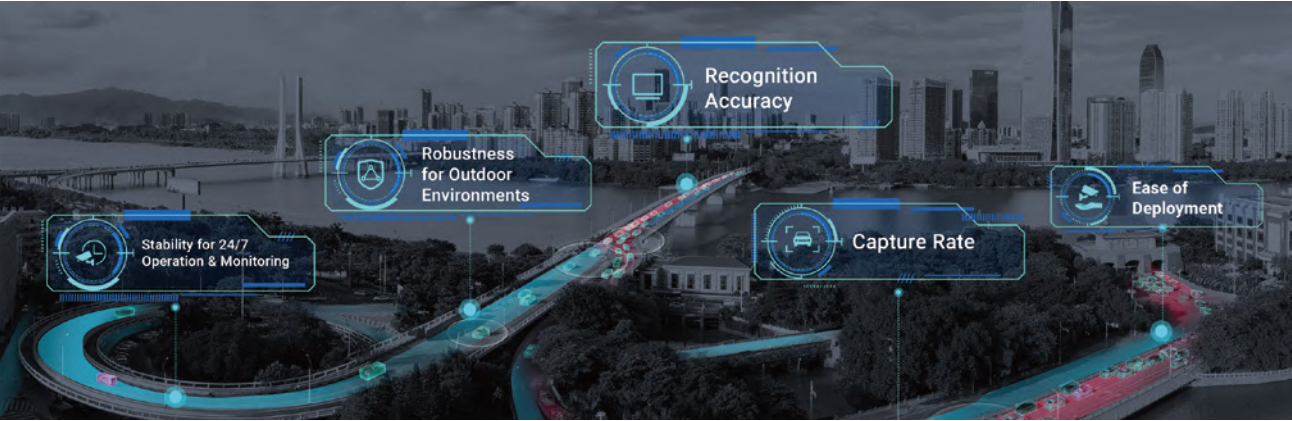


# Milesight LPR Camera Selecting Guide

LPR Camera For Road Traffic Monitoring

Imagine a camera that can relieve the burden of manually monitoring traffic by human labor, which can detect, read the plates accurately, measure speed to optimize the traffic flow. Milesight provides such excellent LPR cameras that go beyond reading plates, but can recognize vehicle type, vehicle color, plate color, and etc., for more advanced usage with AI-empowered LPR algorithm embedded. Plus, Milesight LPR camera has further integrated with other cutting-edge technologies such as 3D Radar, supplement light, PTZ to significantly expand its core functionality. With stunning and impressive capabilities combined, Milesight LPR cameras are beneficial for high-demanding road traffic monitoring situations.

## Key Considerations for Traffic Monitoring

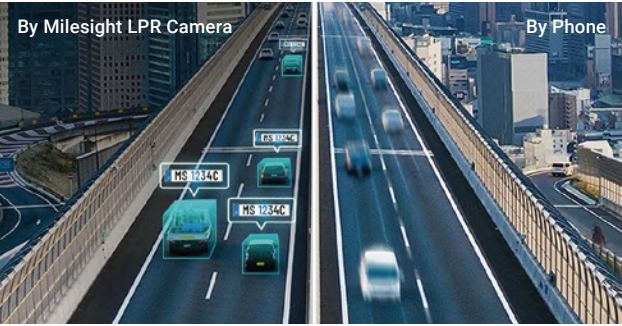


## How Milesight Fulfills Your Needs on Traffic Monitoring

Superior Images + Advanced AI Algorithms + Customer-oriented Solutions

### Failed to capture the fast moving vehicle?

It's always the top concern to capture plates of speedy vehicles in traffic monitoring. Milesight LPR cameras adopted the 1/2" large sensor, supplement light and feature 100fps ultra high frame rate with advanced image processing algorithms to capture all clear details of fast moving vehicles during the day and night.



### Can't get clear plates at night?

Poor lighting can be another major challenge in traffic monitoring. However, that won't be an issue for us. Milesight adopts supplement light and develops a dedicated LPR Image Mode to enhance the performance of 24/7 traffic monitoring through both hardware and software.



### Frustrated about misreads and false positives?

Based on AI deep learning neural networks, our embedded AI LPR algorithms allow the camera to detect plates and read characters precisely, reducing false positives (bumper stickers, decals, etc.) and dealing better with smudges, plate variation, lighting changes or different angles than traditional LPR algorithms. Besides, Milesight AI LPR camera can also realize AI-based attributes recognition such as vehicle type, vehicle color and plate color, providing a new level of insights for further analysis.



Traditional LPR Algorithms High rate of false positives  
Milesight AI LPR Algorithms Focus on plates precisely



### What about other advanced functions that customers can benefit from?

- Real-time traffic data with detailed vehicle features, including plate, plate color, vehicle type, vehicle color, speed, direction and so on.
- Quick search for the suspected vehicles based on plate, plate color, vehicle type, vehicle color and etc.
- Information about traffic flows with 24/7 car counting
- Customer-oriented solutions (Coming soon)

## Recommended Models



Radar AI LPR 4X Pro Bullet Plus Camera

MS-C2866-X4TLVPC / MS-C2866-X4TLVPA



Supplement Light AI LPR 4X Pro Bullet Plus Camera

MS-C2866-X4TLWC / MS-C2866-X4TLWA



AI LPR 5X PTZ Bullet Plus Camera

MS-C2867-X5TLPC / MS-C2867-X5TLPA



AI LPR 4X Pro Bullet Plus Camera

MS-C2866-X4TLPC / MS-C2866-X4TLPA





AI LPR Motorized Bullet Network Camera		
Model	MS-C2964-R(T)F(I)LPC (2MP)	MS-C5364-F(I)LPC (5MP)
Image Sensor	1/2.8" Progressive Scan CMOS	
Lens	Motorized 2.7~13.5mm/3.0~10.5mm/7~22mm@F1.4 P-Iris(Optional)	
Field of View	H111°~H34°/D130°~D39°/V60°~V19° (2.7~13.5mm)	H99°~H31°/D124°~D38°/V72°~V23° (2.7~13.5mm)
Max. Frame Rate	60fps@(1920x1080) 100fps@(1920x1080)(Optional for T Series)	30fps@(2592x1944)
Min. Illumination	Color: 0.005Lux@F1.4 B/W: 0Lux with IR on	Color: 0.008Lux@F1.4 B/W: 0Lux with IR on
WDR	140dB Super WDR (Super WDR Pro is optional for T Series)	120dB Super WDR
Video Compression	H.265*/H.265(HEVC)/H.264*/H.264/MJPEG	
LPR	Max. Vehicle Speed	200km/h
	Recognition Accuracy	>95%
	Coverage	Support simultaneous detection of 4 regions
	Smart Traffic Detection	License Plate Recognition, Plate Type Classification, Plate Color Recognition, Vehicle Type Classification, Vehicle Color Recognition
Interface	PoE (802.3af), DC 12V; Audio I/O, Alarm I/O, PoE (802.3af), DC 12V (Multi-interface Version)	
Compatibility	API, HTTP, TCP	


AI LPR Motorized Pro Bullet Plus Network Camera		
Model	MS-C2966-R(T)F(I)LPC (2MP)	MS-C5366-F(I)LPC (5MP)
Image Sensor	1/2.8" Progressive Scan CMOS	
Lens	Motorized 2.7~13.5mm/3.0~10.5mm/7~22mm@F1.4 P-Iris(Optional)	
Field of View	H113°~H33°/D130°~D38°/V60°~V18° (2.7~13.5mm)	H113°~H33°/D138°~D42°/V83°~V25° (2.7~13.5mm)
Max. Frame Rate	60fps@(1920x1080) 100fps@(1920x1080)(Optional for T Series)	30fps@(2592x1944)
Min. Illumination	Color: 0.005Lux@F1.4 B/W: 0Lux with IR on	Color: 0.008Lux@F1.4 B/W: 0Lux with IR on
WDR	140dB Super WDR (Super WDR Pro is optional for T Series)	120dB Super WDR
Video Compression	H.265*/H.265(HEVC)/H.264*/H.264/MJPEG	
LPR	Max. Vehicle Speed	200km/h
	Recognition Accuracy	>95%
	Coverage	Support simultaneous detection of 4 regions
	Smart Traffic Detection	License Plate Recognition, Plate Type Classification, Plate Color Recognition, Vehicle Type Classification, Vehicle Color Recognition
Interface	Audio I/O, Alarm I/O, PoE (802.3at), DC 12V	
Compatibility	API, HTTP, TCP	


AI LPR 4X/12X Pro Bullet Plus Network Camera			
Model	MS-C2866-X4TLPC (2MP)	MS-C2966-X12R(T)LPC (2MP)	MS-C5366-X12LPC (5MP)
Image Sensor	1/2" Progressive Scan CMOS	1/2.8" Progressive Scan CMOS	
Lens	8~32mm, 4X Optical Zoom, 16X Digital Zoom	5.3~64mm, 12X Optical Zoom, 16X Digital Zoom	
Field of View	H44°~H13°/D51°~D15°/V25°~V7°	H61°~H5°/D69°~D5°/V36°~V2°	H57°~H4°/D69°~D5°/V44°~V1°
Max. Frame Rate	60fps@(1920x1080) 100fps@(1920x1080)(Optional for T Series)		30fps@(2592x1944)
Min. Illumination	Color: 0.002Lux@F1.6 B/W: 0Lux with IR on	Color: 0.005Lux@F1.6 B/W: 0Lux with IR on	Color: 0.008Lux@F1.6 B/W: 0Lux with IR on
WDR	140dB Super WDR Pro	140dB Super WDR (Super WDR Pro is optional for T Series)	120dB Super WDR
Video Compression	H.265+/H.265(HEVC)/H.264+/H.264/MJPEG		
LPR	Max. Vehicle Speed	200km/h	
	Recognition Accuracy	>95%	
	Coverage	Support simultaneous detection of 4 regions	
	Smart Traffic Detection	License Plate Recognition, Plate Type Classification, Plate Color Recognition, Vehicle Type Classification, Vehicle Color Recognition	
Interface	Audio I/O, Alarm I/O, PoE (802.3at), DC 12V		
Compatibility	API, HTTP, TCP		

Supplement Light AI LPR Motorized Pro Bullet Plus Network Camera		
Model	MS-C2966-RF(I)LWPC (2MP)	
Image Sensor	1/2.8" Progressive Scan CMOS	
Lens	Motorized 2.7~13.5mm@F1.4 P-Iris(Optional)	
Field of View	H113°~H33°/D130°~D38°/V60°~V18° (2.7~13.5mm)	
Max. Frame Rate	60fps@(1920x1080)	
Min. Illumination	Color: 0.005Lux@F1.4 B/W: 0Lux with IR on	
WDR	140dB Super WDR	
Video Compression	H.265*/H.265(HEVC)/H.264*/H.264/MJPEG	
LPR	Max. Vehicle Speed	200km/h
	Recognition Accuracy	>95%
	Coverage	Support simultaneous detection of 4 regions
	Smart Traffic Detection	License Plate Recognition, Plate Type Classification, Plate Color Recognition, Vehicle Type Classification, Vehicle Color Recognition
Illuminator	Supplement Light	IR LED Light or White LED Light
	Light Bead	9 (For IR LED Light) / 6 (For White LED Light)
	Illumination Distance	Up to 20m
	Light Control	Auto/Always On/Off/Customize
Interface	RS485(Multi-interface Version), Wiegand Interface, Audio I/O, Alarm I/O, PoE (802.3at), DC 12V	
Compatibility	API, HTTP, TCP, Wiegand Protocol	

Supplement Light AI LPR 4X Pro Bullet Plus Network Camera		
Model	MS-C2866-X4TLWC (2MP)	
Image Sensor	1/2" Progressive Scan CMOS	
Lens	8~32mm, 4X Optical Zoom, 16X Digital Zoom	
Field of View	H44°~H13°/D51°~D15°/V25°~V7°	
Max. Frame Rate	100fps@(1920x1080)	
Min. Illumination	Color: 0.002Lux@F1.6 B/W: 0Lux with IR on	
WDR	140dB Super WDR Pro	
Video Compression	H.265*/H.265(HEVC)/H.264*/H.264/MJPEG	
LPR	Max. Vehicle Speed	200km/h
	Recognition Accuracy	>95%
	Coverage	Support simultaneous detection of 4 regions
	Smart Traffic Detection	License Plate Recognition, Plate Type Classification, Plate Color Recognition, Vehicle Type Classification, Vehicle Color Recognition
Illuminator	Supplement Light	IR LED Light or White LED Light
	Light Bead	9 (For IR LED Light) / 6 (For White LED Light)
	Illumination Distance	Up to 40m
	Light Control	Auto/Always On/Off/Customize
Interface	RS485(Multi-interface Version), Wiegand Interface, Audio I/O, Alarm I/O, Ethernet Port, DC 12V	
Compatibility	API, HTTP, TCP, Wiegand Protocol	




<div></div> <div>AI LPR 12X PTZ Bullet Network Camera</div>			
Model		MS-C2961-X12R(T)LPC (2MP)	MS-C5361-X12LPC (5MP)
Image Sensor		1/2.8" Progressive Scan CMOS	
Lens		5.3~64mm@F1.6~F2.8, 12X Optical Zoom, 16X Digital Zoom	
Field of View		H61°~H5°/D69°~D5°/V36°~V2°	H57°~H4°/D69°~D5°/V44°~V1°
IR Distance		Up to 140m	
Max. Frame Rate		60fps@(1920x1080), 100fps@(1920x1080)(Optional for T Series)	30fps@(2592x1944)
Min. Illumination		Color: 0.005Lux@F1.6 B/W: 0Lux with IR on	Color: 0.008Lux@F1.6 B/W: 0Lux with IR on
WDR		140dB Super WDR (Super WDR Pro is optional for T Series)	120dB Super WDR
Video Compression		H.265*/H.265(HEVC)/H.264*/H.264/MJPEG	
LPR	Max. Vehicle Speed	200km/h	
	Recognition Accuracy	>95%	
	Coverage	Support simultaneous detection of 4 regions	
	Smart Traffic Detection	License Plate Recognition, Plate Type Classification, Plate Color Recognition, Vehicle Type Classification, Vehicle Color Recognition	
PTZ	Pan Range/Pan Speed	360°endless; Pan Manual Speed: 0.1°~50°/s, Pan Preset Speed: 50°/s	
	Tilt Range/Tilt Speed	-45°~30°; Tilt Manual Speed: 0.1°~25°/s, Tilt Preset Speed: 25°/s	
	Preset/Patrol/Pattern	300 Presets/8 Patrols/4 Patterns	
Interface		Audio I/O (Optional), Alarm I/O (Optional), PoE (802.3at), DC 12V	
Compatibility		API, HTTP, TCP	





# AI LPR 5X/20X/23X PTZ Bullet Plus Network Camera


Model		MS-C2867-X5TLPC (2MP)	MS-C2867-X20TLPC (2MP)	MS-C5367-X23LPC (5MP)
Image Sensor		1/2" Progressive Scan CMOS		1/2.8" Progressive Scan CMOS
Lens		11~55mm, 5X Optical Zoom, 16X Digital Zoom	6.4~128mm, 20X Optical Zoom, 16X Digital Zoom	5~117mm, 23X Optical Zoom, 16X Digital Zoom
Field of View		H34°~H8°/D39°~D9°/V20°~V4°	H60°~H3°/D67°~D4°/V37°~V1°	H55°~H3°/D68°~D4°/V42°~V2°
IR Distance		Up to 180m		
Max. Frame Rate		100fps@(1920x1080)		30fps@(2592x1944)
Min. Illumination		Color: 0.002Lux@F1.7 B/W: 0Lux with IR on	Color: 0.002Lux@F1.7 B/W: 0Lux with IR on	Color: 0.008Lux@F1.5 B/W: 0Lux with IR on
WDR		140dB Super WDR Pro		120dB Super WDR
Video Compression		H.265*/H.265(HEVC)/H.264*/H.264/MJPEG		
LPR	Max. Vehicle Speed	200km/h		
	Recognition Accuracy	>95%		
	Coverage	Support simultaneous detection of 4 regions		
	Smart Traffic Detection	License Plate Recognition, Plate Type Classification, Plate Color Recognition, Vehicle Type Classification, Vehicle Color Recognition		
PTZ	Pan Range/Pan Speed	360°endless; Pan Manual Speed: 0.1°~60°/s, Pan Preset Speed: 60°/s		
	Tilt Range/Tilt Speed	-45°~30°; Tilt Manual Speed: 0.1°~30°/s, Tilt Preset Speed: 30°/s		
	Preset/Patrol/Pattern	300 Presets/8 Patrols/4 Patterns		
Interface		Audio I/O, Alarm I/O, PoE (802.3at), DC 12V		
Compatibility		API, HTTP, TCP		


<div></div> <div>Radar AI LPR 4X/12X Pro Bullet Plus Network Camera</div>				
Model		MS-C2866-X4TLVPC (2MP)	MS-C2966-X12R(T)LVPC (2MP)	MS-C5366-X12LVPC (5MP)
Image Sensor		1/2" Progressive Scan CMOS	1/2.8" Progressive Scan CMOS	
Lens		8~32mm, 4X Optical Zoom, 16X Digital Zoom	5.3~64mm, 12X Optical Zoom, 16X Digital Zoom	
Field of View		H44°~H13°/D51°~D15°/V25°~V7°	H61°~H5°/D69°~D5°/V36°~V2°	H57°~H4°/D69°~D5°/V44°~V1°
IR Distance		Up to 180m		
Max. Frame Rate		60fps@(1920x1080), 100fps@(1920x1080)(Optional for T Series)		30fps@(2592x1944)
Min. Illumination		Color: 0.002Lux@F1.6 B/W: 0Lux with IR on	Color: 0.005Lux@F1.6 B/W: 0Lux with IR on	Color: 0.008Lux@F1.6 B/W: 0Lux with IR on
WDR		140dB Super WDR Pro	140dB Super WDR (Super WDR Pro is optional for T Series)	120dB Super WDR
LPR	Max. Vehicle Speed	200km/h		
	Recognition Accuracy	>95%		
	Coverage	Support simultaneous detection of 4 regions		
	Smart Traffic Detection	License Plate Recognition, Plate Color Recognition, Vehicle Type Classification, Vehicle Color Recognition, Vehicle Direction Detection, Speed Detection, Traffic Flow Detection		
Radar	Working Frequency	60GHz, 61~62GHz		
	Capture Rate	>99% (Traffic jam >95%)		
	Lane Coverage	1~4 Lanes (Recognition ≥95% individually)		
	Tracking Target	Up to 32		
	Speed Detection Range & Accuracy	±5km/h~±200km/h; ±0.36km/h(Accuracy)		
	Detection Distance&Accuracy	Up to 90m; ±0.4m(Accuracy)		
	Installation Height	2~7m		
Interface		Audio I/O, Alarm I/O, PoE (802.3at), DC 12V		
Compatibility		API, HTTP, TCP		




<div></div> <div>AI LPR Motorized Pro Dome Network Camera</div>		
Model		MS-C2972-RF(I)LPC (2MP)
Image Sensor		1/2.8" Progressive Scan CMOS
Lens		Motorized 2.7~13.5mm/3~10.5mm@F1.4 P-Iris(Optional)
Field of View		H115°~H34°/D135°~D39°/V62°~V19° (2.7~13.5mm)
Max. Frame Rate		60fps@(1920x1080)
Min. Illumination		Color: 0.005Lux@F1.4 B/W: 0Lux with IR on
WDR		140dB Super WDR
Video Compression		H.265*/H.265(HEVC)/H.264*/H.264/MJPEG
LPR	Max. Vehicle Speed	200km/h
	Recognition Accuracy	>95%
	Coverage	Support simultaneous detection of 4 regions
	Smart Traffic Detection	License Plate Recognition, Plate Type Classification, Plate Color Recognition, Vehicle Type Classification, Vehicle Color Recognition
Interface		Built-in Microphone and 1 Audio Output Interface, Alarm I/O, PoE (802.3af), DC 12V
Compatibility		API, HTTP, TCP


<div></div> <div>AI LPR 23X/36X Speed Dome Network Camera</div>			
Model		MS-C2941-X23TLPC (2MP)	MS-C2841-X36TLPC (2MP)
Image Sensor		1/2.8" Progressive Scan CMOS	1/2" Progressive Scan CMOS
Lens		5~117mm, 23X Optical Zoom, 16X Digital Zoom	5.7~205.2mm, 36X Optical Zoom, 16X Digital Zoom
Field of View		H60°~H3°/D69°~D4°/V35°~V2°	H63°~H3°/D69°~D3°/V38°~V1°
IR Distance		Up to 200m	Up to 300m
Max. Frame Rate		100fps@(1920x1080)	
Min. Illumination		Color: 0.005Lux@F1.5 B/W: 0Lux with IR on	Color: 0.002Lux@F1.55 B/W: 0Lux with IR on
WDR		140dB Super WDR Pro	
Video Compression		H.265*/H.265(HEVC)/H.264*/H.264/MJPEG	
LPR	Max. Vehicle Speed	200km/h	
	Recognition Accuracy	>95%	
	Coverage	Support simultaneous detection of 4 regions	
	Smart Traffic Detection	License Plate Recognition, Plate Type Classification, Plate Color Recognition, Vehicle Type Classification, Vehicle Color Recognition	
PTZ	Pan Range/Pan Speed	360°endless / Pan Manual Speed: 0.1°~400°/s, Pan Preset Speed: 400°/s	
	Tilt Range/Tilt Speed	-5°~90°(Auto Flip) / Tilt Manual Speed: 0.1°~320°/s, Tilt Preset Speed: 320°/s	
	Preset/Patrol/Pattern	300 Presets/8 Patrols/4 Patterns	
Wiper (Optional)		-	Support
Interface		RS485, Audio I/O, 4*Alarm In, 2*Alarm Out, PoE (802.3at), AC 24V	
Compatibility		API, HTTP, TCP	


<div></div> <div>AI LPR Motorized Bullet Network Camera</div>		
Model		MS-C2964-TF(I)LPA (2MP)
Image Sensor		1/2.8" Progressive Scan CMOS
Lens		Motorized 2.7~13.5mm/3.0~10.5mm/7~22mm@F1.4 P-Iris(Optional)
Field of View		H111°~H34°/D130°~D39°/V60°~V19°(2.7~13.5mm)
Max. Frame Rate		90fps@(1920x1080)
Min. Illumination		Color: 0.005Lux@F1.4 B/W: 0Lux with IR on
WDR		120dB Super WDR
Video Compression		H.265*/H.265(HEVC)/H.264*/H.264/MJPEG
LPR	Max. Vehicle Speed	200km/h
	Recognition Accuracy	>95%
	Coverage	Support simultaneous detection of 4 regions
	Smart Traffic Detection	License Plate Recognition, Plate Type Classification, Plate Color Recognition, Vehicle Type Classification, Vehicle Color Recognition
Interface		PoE (802.3af), DC 12V; Audio I/O, Alarm I/O, PoE (802.3af), DC 12V (Multi-interface Version)
Compatibility		API, HTTP, TCP


<div></div> <div>AI LPR Motorized Pro Bullet Plus Network Camera</div>		
Model		MS-C2966-TF(I)LPA (2MP)
Image Sensor		1/2.8" Progressive Scan CMOS
Lens		Motorized 2.7~13.5mm/3.0~10.5mm/7~22mm@F1.4 P-Iris(Optional)
Field of View		H113°~H33°/D130°~D38°/V60°~V18° (2.7~13.5mm)
Max. Frame Rate		90fps@(1920x1080)
Min. Illumination		Color: 0.005Lux@F1.4 B/W: 0Lux with IR on
WDR		120dB Super WDR
Video Compression		H.265*/H.265(HEVC)/H.264*/H.264/MJPEG
LPR	Max. Vehicle Speed	200km/h
	Recognition Accuracy	>95%
	Coverage	Support simultaneous detection of 4 regions
	Smart Traffic Detection	License Plate Recognition, Plate Type Classification, Plate Color Recognition, Vehicle Type Classification, Vehicle Color Recognition
Interface		Audio I/O, Alarm I/O, PoE (802.3at), DC 12V
Compatibility		API, HTTP, TCP


<div></div> <div>AI LPR 4X/12X Pro Bullet Plus Network Camera</div>			
Model		MS-C2866-X4TLPA (2MP)	MS-C2966-X12TLPA (2MP)
Image Sensor		1/2" Progressive Scan CMOS	1/2.8" Progressive Scan CMOS
Lens		8~32mm, 4X Optical Zoom, 16X Digital Zoom	5.3~64mm, 12X Optical Zoom, 16X Digital Zoom
Field of View		H44°~H13°/D51°~D15°/V25°~V7°	H61°~H5°/D69°~D5°/V36°~V2°
Max. Frame Rate		90fps@(1920x1080)	
Min. Illumination		Color: 0.002Lux@F1.6 B/W: 0Lux with IR on	Color: 0.005Lux@F1.6 B/W: 0Lux with IR on
WDR		120dB Super WDR	
Video Compression		H.265*/H.265(HEVC)/H.264*/H.264/MJPEG	
LPR	Max. Vehicle Speed	200km/h	
	Recognition Accuracy	>95%	
	Coverage	Support simultaneous detection of 4 regions	
	Smart Traffic Detection	License Plate Recognition, Plate Type Classification, Plate Color Recognition, Vehicle Type Classification, Vehicle Color Recognition	
Interface		Audio I/O, Alarm I/O, PoE (802.3at), DC 12V	
Compatibility		API, HTTP, TCP	




<div></div> <div>Supplement Light AI LPR Motorized Pro Bullet Plus Network Camera</div>		
Model		MS-C2966-TF(I)LWPA (2MP)
Image Sensor		1/2.8" Progressive Scan CMOS
Lens		Motorized 2.7~13.5mm@F1.4 P-Iris(Optional)
Field of View		H113°~H33°/D130°~D38°/V60°~V18° (2.7~13.5mm)
Max. Frame Rate		90fps@(1920x1080)
Min. Illumination		Color: 0.005Lux@F1.4 B/W: 0Lux with IR on
WDR		120dB Super WDR
Video Compression		H.265*/H.265(HEVC)/H.264*/H.264/MJPEG
LPR	Max. Vehicle Speed	200km/h
	Recognition Accuracy	>95%
	Coverage	Support simultaneous detection of 4 regions
	Smart Traffic Detection	License Plate Recognition, Plate Type Classification, Plate Color Recognition, Vehicle Type Classification, Vehicle Color Recognition
Illuminator	Supplement Light	IR LED Light or White LED Light
	Light Bead	9 (For IR LED Light) / 6 (For White LED Light)
	Illumination Distance	Up to 20m
	Light Control	Auto/Always On/Off/Customize
Interface		RS485(Multi-interface Version), Wiegand Interface, Audio I/O, Alarm I/O, PoE (802.3at), DC 12V
Compatibility		API, HTTP, TCP, Wiegand Protocol


<div></div> <div>Supplement Light AI LPR 4X Pro Bullet Plus Network Camera</div>		
Model		MS-C2866-X4TLWA (2MP)
Image Sensor		1/2" Progressive Scan CMOS
Lens		8~32mm, 4X Optical Zoom, 16X Digital Zoom
Field of View		H44°~H13°/D51°~D15°/V25°~V7°
Max. Frame Rate		90fps@(1920x1080)
Min. Illumination		Color: 0.002Lux@F1.6 B/W: 0Lux with IR on
WDR		120dB Super WDR
Video Compression		H.265*/H.265(HEVC)/H.264*/H.264/MJPEG
LPR	Max. Vehicle Speed	200km/h
	Recognition Accuracy	>95%
	Coverage	Support simultaneous detection of 4 regions
	Smart Traffic Detection	License Plate Recognition, Plate Type Classification, Plate Color Recognition, Vehicle Type Classification, Vehicle Color Recognition
Illuminator	Supplement Light	IR LED Light or White LED Light
	Light Bead	9 (For IR LED Light) / 6 (For White LED Light)
	Illumination Distance	Up to 40m
	Light Control	Auto/Always On/Off/Customize
Interface		RS485(Multi-interface Version), Wiegand Interface, Audio I/O, Alarm I/O, Ethernet Port, DC 12V
Compatibility		API, HTTP, TCP, Wiegand Protocol

<div></div> <div>AI LPR 5X/20X PTZ Bullet Plus Network Camera</div>		
Model		MS-C2867-X5TLPA (2MP) MS-C2867-X20TLPA (2MP)
Image Sensor		1/2" Progressive Scan CMOS
Lens		11~55mm, 5X Optical Zoom, 16X Digital Zoom 6.4~128mm, 20X Optical Zoom, 16X Digital Zoom
Field of View		H34°~H8°/D39°~D9°/V20°~V4° H60°~H3°/D67°~D4°/V37°~V1°
IR Distance		Up to 180m
Max. Frame Rate		90fps@(1920x1080)
Min. Illumination		Color: 0.002Lux@F1.7 B/W: 0Lux with iR on
WDR		120dB Super WDR
Video Compression		H.265*/H.265(HEVC)/H.264*/H.264/MJPEG
LPR	Max. Vehicle Speed	200km/h
	Recognition Accuracy	>95%
	Coverage	Support simultaneous detection of 4 regions
	Smart Traffic Detection	License Plate Recognition, Plate Type Classification, Plate Color Recognition, Vehicle Type Classification, Vehicle Color Recognition
PTZ	Pan Range/Pan Speed	360°endless; Pan Manual Speed: 0.1°~60°/s, Pan Preset Speed: 60°/s
	Tilt Range/Tilt Speed	-45°~30°; Tilt Manual Speed: 0.1°~30°/s, Tilt Preset Speed: 30°/s
	Preset/Patrol/Pattern	300 Presets/8 Patrols/4 Patterns
Interface		Audio I/O, Alarm I/O, PoE (802.3at), DC 12V
Compatibility		API, HTTP, TCP

<div></div> <div>Radar AI LPR 4X/12X Pro Bullet Plus Network Camera</div>		
Model		MS-C2866-X4TLVPA (2MP) MS-C2966-X12TLVPA (2MP)
Image Sensor		1/2" Progressive Scan CMOS 1/2.8" Progressive Scan CMOS
Lens		8~32mm, 4X Optical Zoom, 16X Digital Zoom 5.3~64mm, 12X Optical Zoom, 16X Digital Zoom
Field of View		H44°~H13°/D51°~D15°/V25°~V7° H61°~H5°/D69°~D5°/V36°~V2°
IR Distance		Up to 180m
Max. Frame Rate		90fps@(1920x1080)
Min. Illumination		Color: 0.002Lux@F1.6 B/W: 0Lux with IR on Color: 0.005Lux@F1.6 B/W: 0Lux with IR on
WDR		120dB Super WDR
LPR	Max. Vehicle Speed	200km/h
	Recognition Accuracy	>95%
	Coverage	Support simultaneous detection of 4 regions
	Smart Traffic Detection	License Plate Recognition, Plate Type Classification, Plate Color Recognition, Vehicle Type Classification, Vehicle Color Recognition, Vehicle Direction Detection, Speed Detection, Traffic Flow Detection
Radar	Working Frequency	60GHz, 61~62GHz
	Capture Rate	>99% (Traffic jam >95%)
	Lane Coverage	1~4 Lanes (Recognition ≥95% individually)
	Tracking Target	Up to 32
	Speed Detection Range&Accuracy	±5km/h~±200km/h; ±0.36km/h(Accuracy)
	Detection Distance&Accuracy	Up to 90m; ±0.4m(Accuracy)
Installation Height		2~7m
Interface		Audio I/O, Alarm I/O, PoE (802.3at), DC 12V
Compatibility		API, HTTP, TCP



<div></div> <div>AI LPR Motorized Pro Dome Network Camera</div>		
Model		MS-C2972-TF(I)LPA (2MP)
Image Sensor		1/2.8" Progressive Scan CMOS
Lens		Motorized 2.7~13.5mm/3~10.5mm@F1.4 P-Iris(Optional)
Field of View		H115°~H34°/D135°~D39°/V62°~V19°
Max. Frame Rate		90fps@(1920x1080)
Min. Illumination		Color: 0.005Lux@F1.4 B/W: 0Lux with IR on
WDR		120dB Super WDR
Video Compression		H.265+/H.265(HEVC)/H.264+/H.264/MJPEG
LPR	Max. Vehicle Speed	200km/h
	Recognition Accuracy	>95%
	Coverage	Support simultaneous detection of 4 regions
	Smart Traffic Detection	License Plate Recognition, Plate Type Classification, Plate Color Recognition, Vehicle Type Classification, Vehicle Color Recognition
Interface		Built-in Microphone and 1 Audio Output Interface, Alarm I/O, PoE (802.3af), DC 12V
Compatibility		API, HTTP, TCP

<div></div> <div>AI LPR 23X/36X Speed Dome Network Camera</div>			
Model		MS-C2941-X23TLPA (2MP)	MS-C2841-X36TLPA (2MP)
Image Sensor		1/2.8" Progressive Scan CMOS	1/2" Progressive Scan CMOS
Lens		5~117mm, 23X Optical Zoom, 16X Digital Zoom	5.7~205.2mm, 36X Optical Zoom, 16X Digital Zoom
Field of View		H60°~H3°/D69°~D4°/V35°~V2°	H63°~H3°/D69°~D3°/V38°~V1°
IR Distance		Up to 200m	Up to 300m
Max. Frame Rate		90fps@(1920x1080)	
Min. Illumination		Color: 0.005Lux@F1.5 B/W: 0Lux with IR on	Color: 0.002Lux@F1.55 B/W: 0Lux with IR on
WDR		120dB Super WDR	
Video Compression		H.265+/H.265(HEVC)/H.264+/H.264/MJPEG	
LPR	Max. Vehicle Speed	200km/h	
	Recognition Accuracy	>95%	
	Coverage	Support simultaneous detection of 4 regions	
	Smart Traffic Detection	License Plate Recognition, Plate Type Classification, Plate Color Recognition, Vehicle Type Classification, Vehicle Color Recognition	
PTZ	Pan Range/Pan Speed	360°endless / Pan Manual Speed: 0.1°~400°/s, Pan Preset Speed: 400°/s	
	Tilt Range/Tilt Speed	-5°~90°(Auto Flip) / Tilt Manual Speed: 0.1°~320°/s, Tilt Preset Speed: 320°/s	
	Preset/Patrol/Pattern	300 Presets/8 Patrols/4 Patterns	
Wiper (Optional)		-	Support
Interface		RS485, Audio I/O, 4*Alarm In, 2*Alarm Out, PoE (802.3at), AC 24V	
Compatibility		API, HTTP, TCP	